



bome software

everything sounds.

Bome's Midi Translator

Tutorial: SCS.3 Quick Start

1 Overview

This is a tutorial for Bome's Midi Translator and Stanton SCS.3 devices.

2 Plugin SCS.3 Devices

Plugin SCS.3 devices and open Bome's Midi Translator. Then save the project as SCS.3 quick start.

3 Create aliases

Go to Project-->Properties-->Project Default Midi Ports and create the Alias for the Devices for in and out communication.

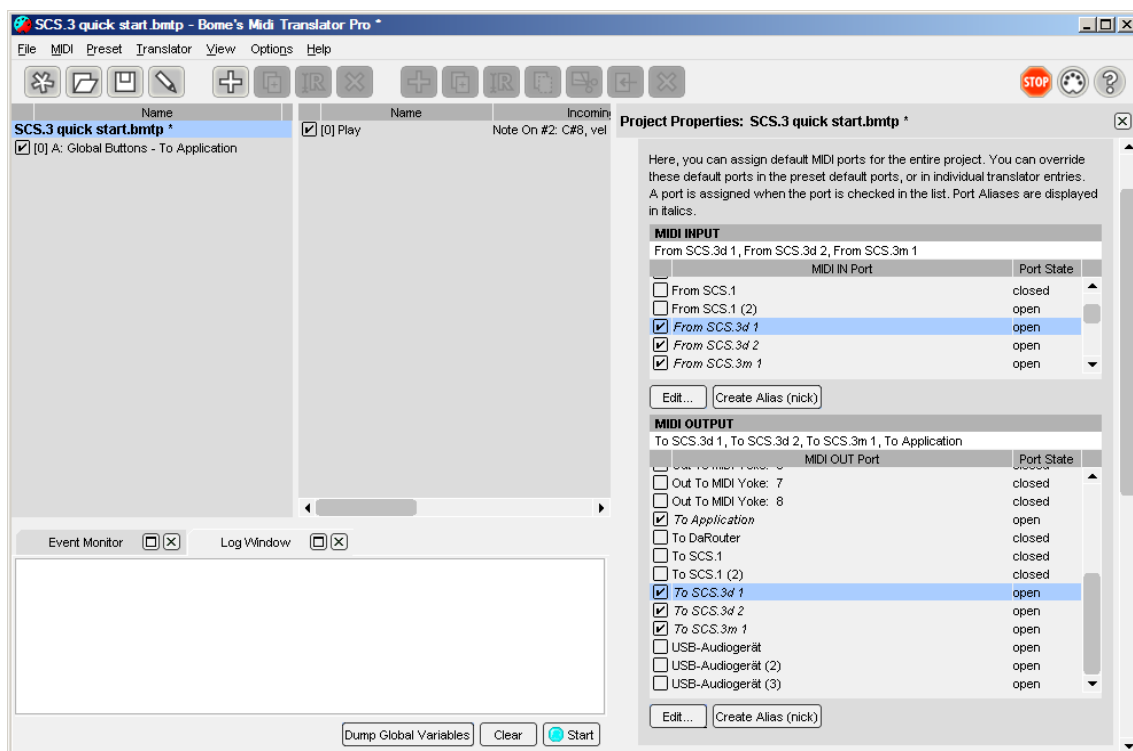


And one for the output communication to the Midi target application:



In the result, you should have this (don't edit the names. For running in DaRouter [see chapter 6] the names must be as described here):

Alias	Type	Device	Description
From SCS.3d 1	MIDI INPUT	SCS.3 Deck 1	MIDI from Deck 1
From SCS.3d 2	MIDI INPUT	SCS.3 Deck 2	MIDI from Deck 2
From SCS.3m 1	MIDI INPUT	SCS.3 Mixer 1	MIDI from Mixer
To SCS.3d 1	MIDI OUTPUT	SCS.3 Deck 1	MIDI to Deck 1 for controlling LED's
To SCS.3d 2	MIDI OUTPUT	SCS.3 Deck 2	MIDI to Deck 2 for controlling LED's
To SCS.3m 1	MIDI OUTPUT	SCS.3 Mixer 1	MIDI to Mixer 1 for controlling LED's
To Application	MIDI OUTPUT	Virtual MIDI Device	MIDI to target Application

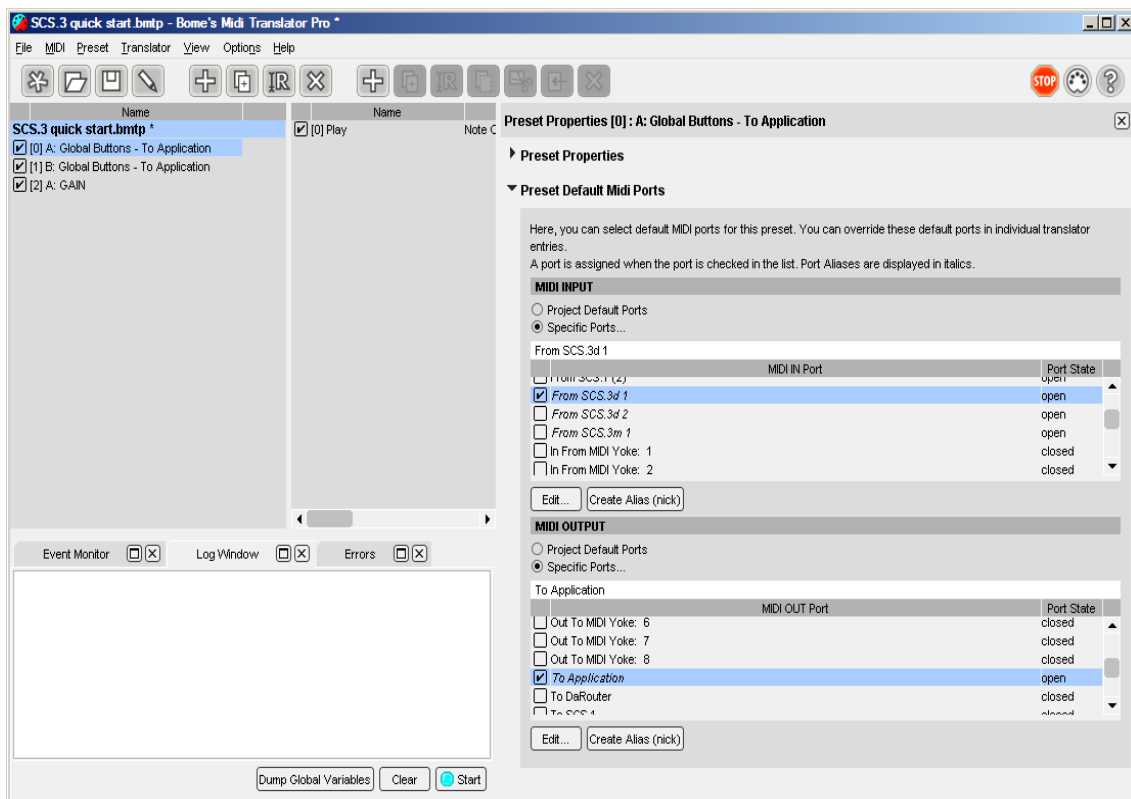


4 Start Preset editing

4.1 Play Deck A:

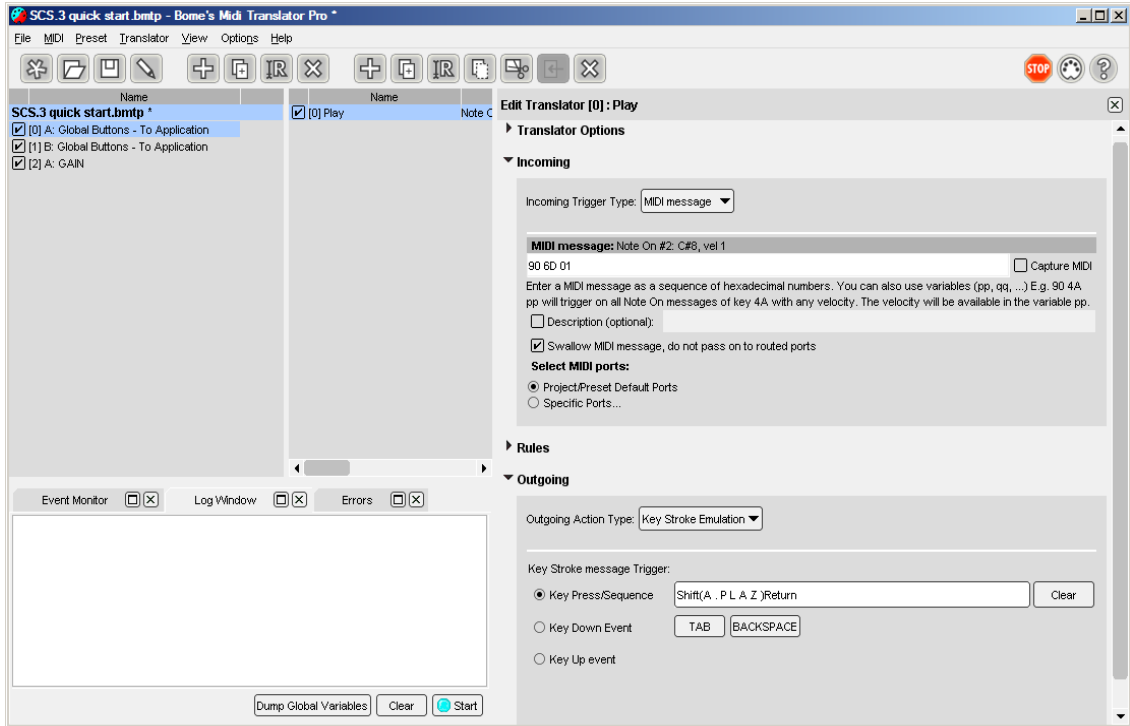
1. Create a Preset with name: A: Global Buttons - To Application
2. Then, you have to overwrite the Alias settings for this Preset:

You have to do this, because we want the Preset only to react on ONE SCS.3d.



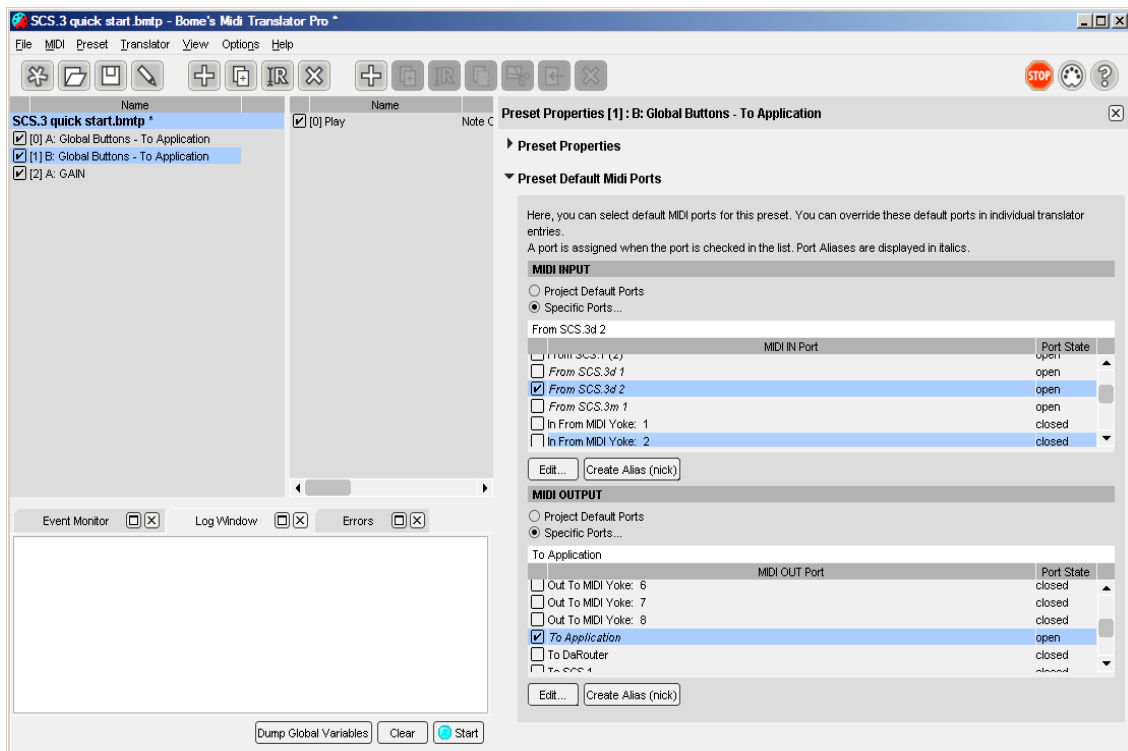
3. Create a Translator: Play
4. Edit Translator: Go to: Translator-->Edit translator
5. Select Incoming Action: MIDI
6. Capture MIDI and Press Button Play
7. As Outgoing Action we select KeyStroke Out, cause we have no target MIDI Application at this point. Enter: A: Play Return

Bome's Midi Translator: Tutorial: SCS.3 Quick Start 4 Start Preset editing



4.2 Play Deck B:

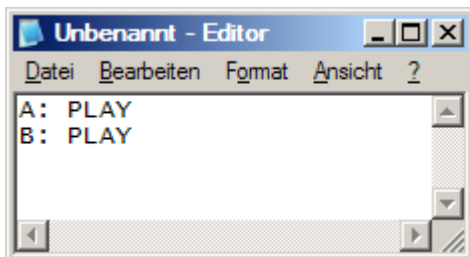
1. Duplicate First Preset: Select the Preset and Go to: Preset-->Duplicate
2. Rename to: B: Global Buttons - To Application
3. Edit Preset Aliases: Select the Deck B now and deselect Deck A



4. Edit outgoing keystroke action: Enter: B: Play Return

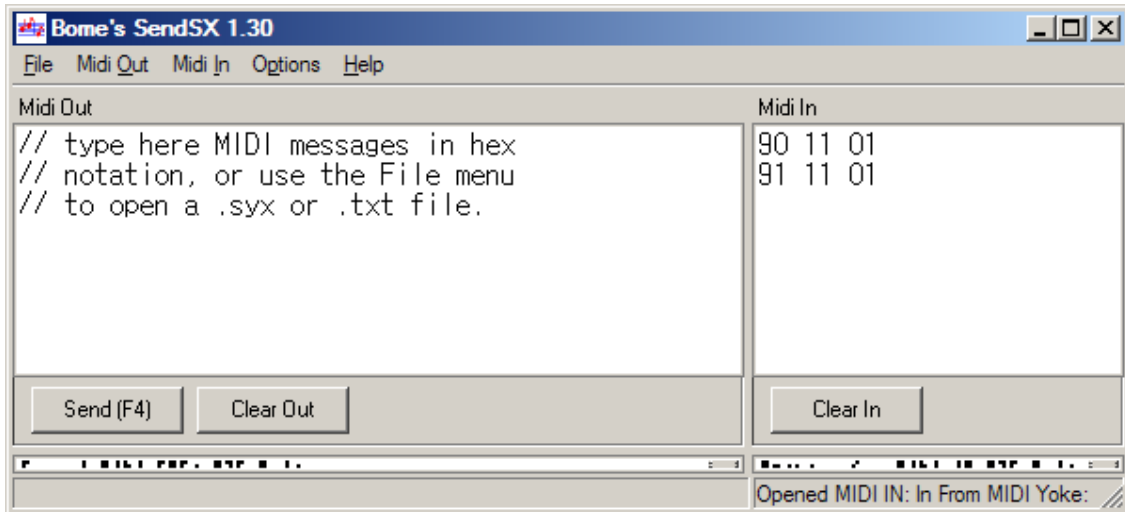
4.3 Test first 2 Presets/Translators

Open a text editor and Press Play on Deck A and Deck B

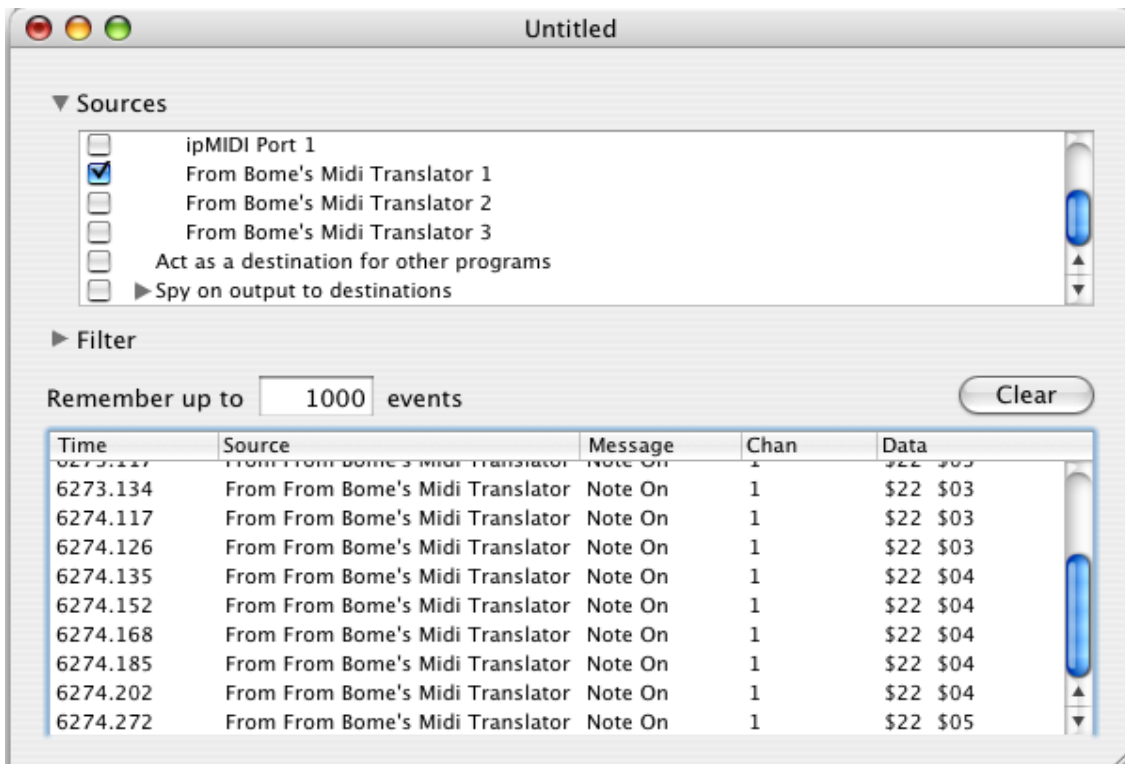


4.4 Change to MIDI out and Test

After the test is ok, you know that the 2 decks are working correctly. So you can change the outgoing actions to any value you want. We take 90 11 01 for Play Deck A and 91 11 01 for Deck B. Now open a MIDI test program for test. In Windows you can take Bome`s send SX (<http://www.bome.com/products/sendsx/>). Open it and take the Virtual Port as Midi In Port you have chosen as Alias "To Application" .



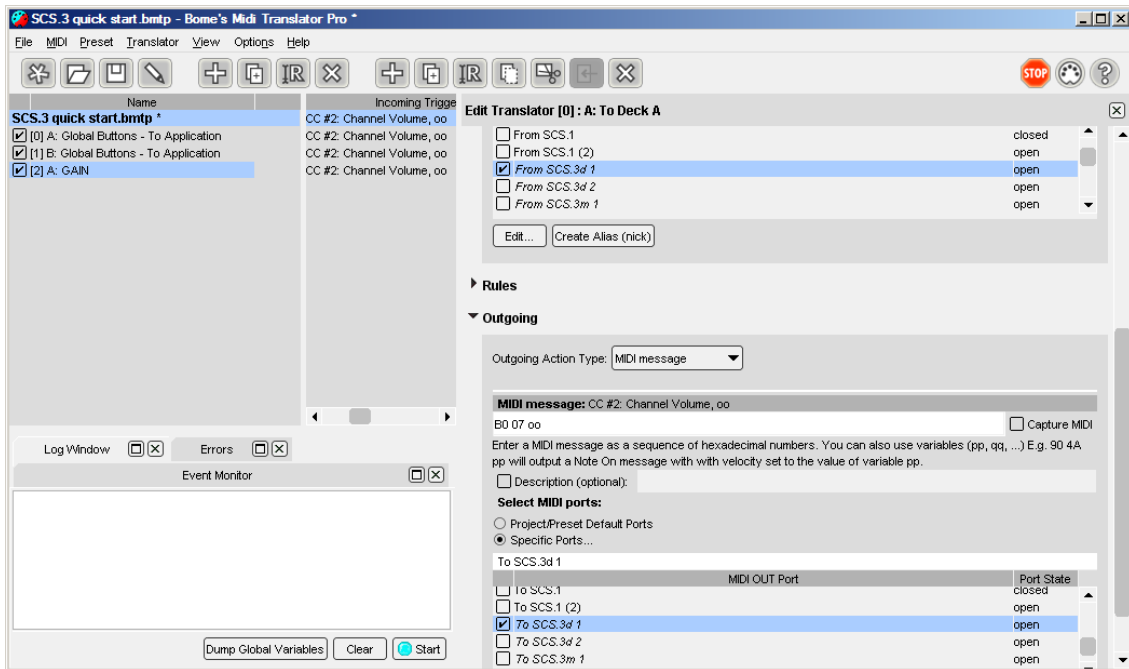
As an alternative for OS X you can use: Midi Monitor(
<http://www.snoize.com/MIDIMonitor/>)



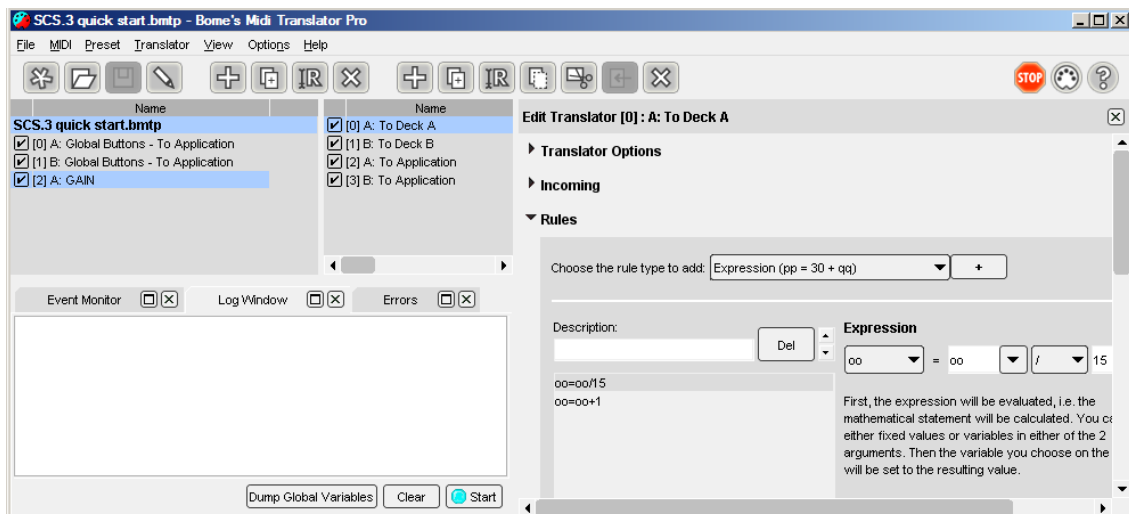
4.5 Gain: A: To Deck A

This translator will do a simple LED feedback to DECK A.

1. Create a translator with name: A: To Deck A
2. Override Aliases in the Translator now (here you can see that you can override Alias settings in Preset AND in Translator options!)



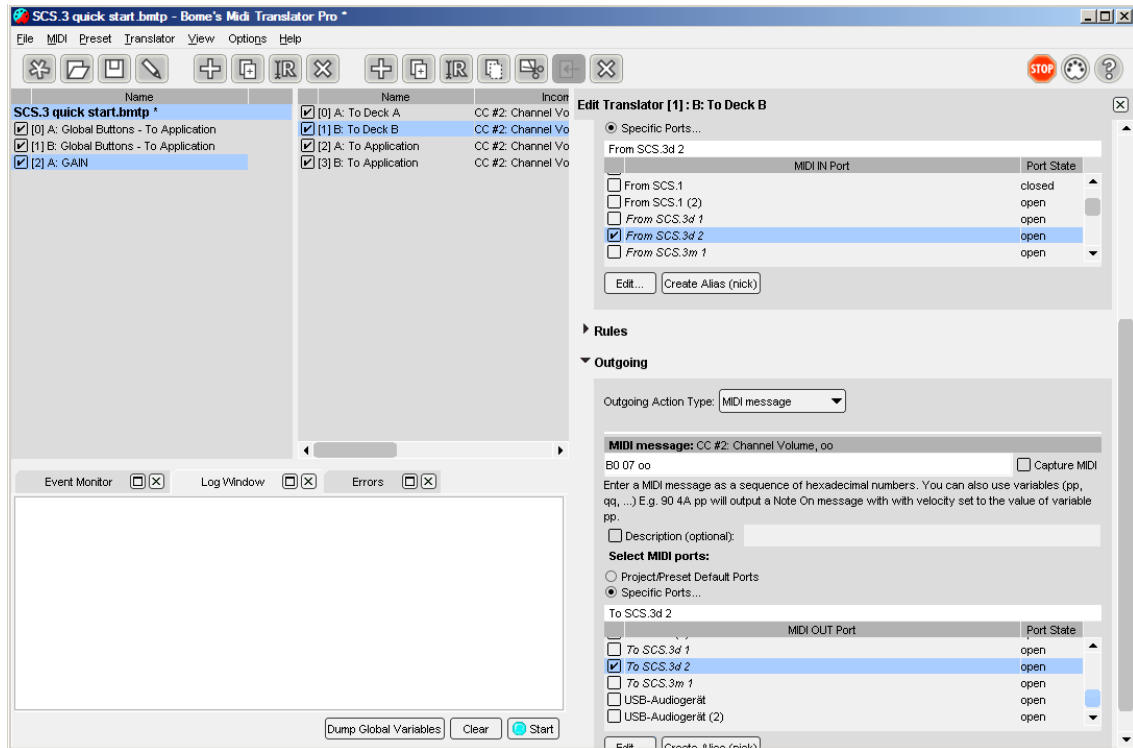
3. Set B0 07 oo as MIDI incoming message and B0 07 oo as MIDI outgoing message.
4. Create rules for LED feedback.



4.6 GAIN: B: To Deck B

This translator will do a simple LED feedback to DECK B.

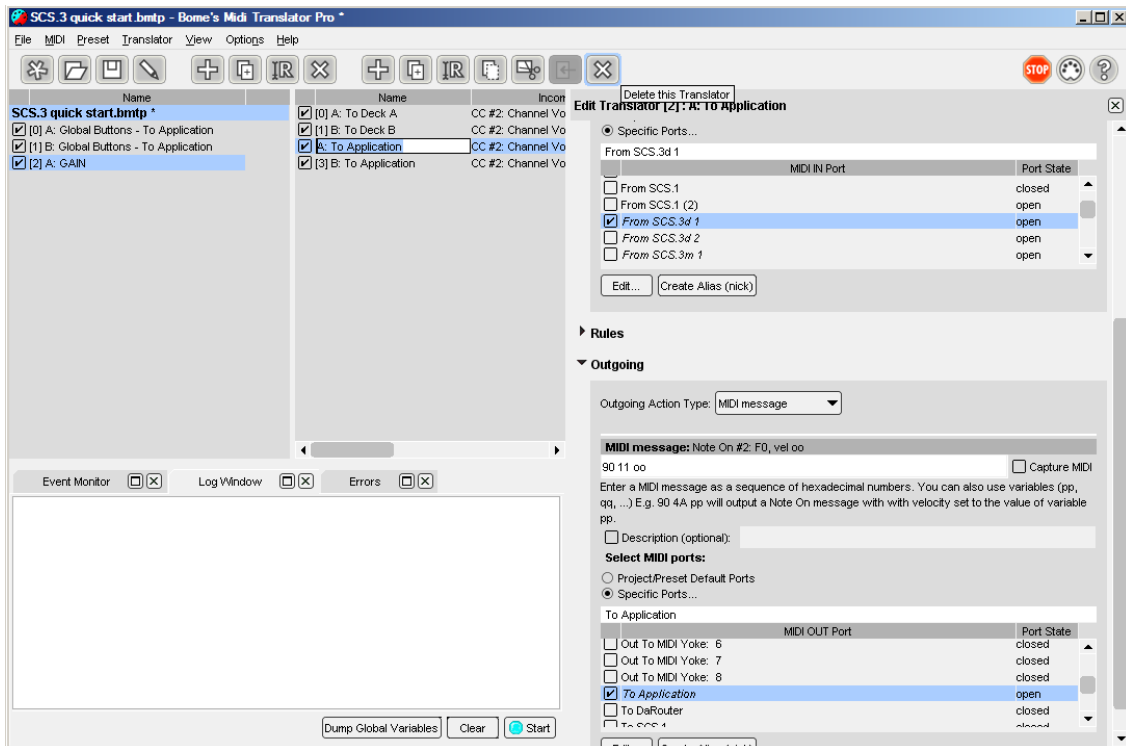
1. Duplicate Translator and rename it to: B: To Deck B
2. Change Alias settings:



4.7 GAIN: A: To Application

This Translator sends the gain to the target application.

1. Create a Translator with name: A: To Application
2. Edit Aliases. Now the outgoing port is "To Application"

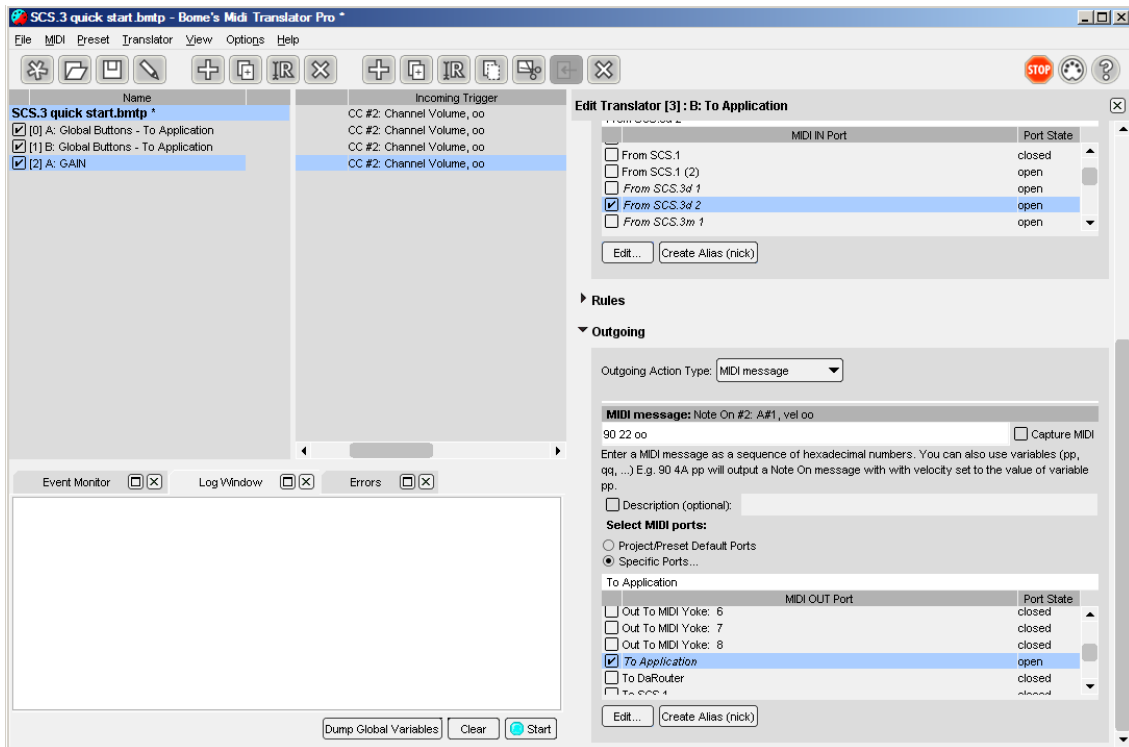


3. Set B0 07 oo as MIDI incoming message and 90 22 oo as MIDI outgoing message.

4.8 GAIN: B: To Application

1. duplicate Translator: A: To Application and rename it to : B: To Application

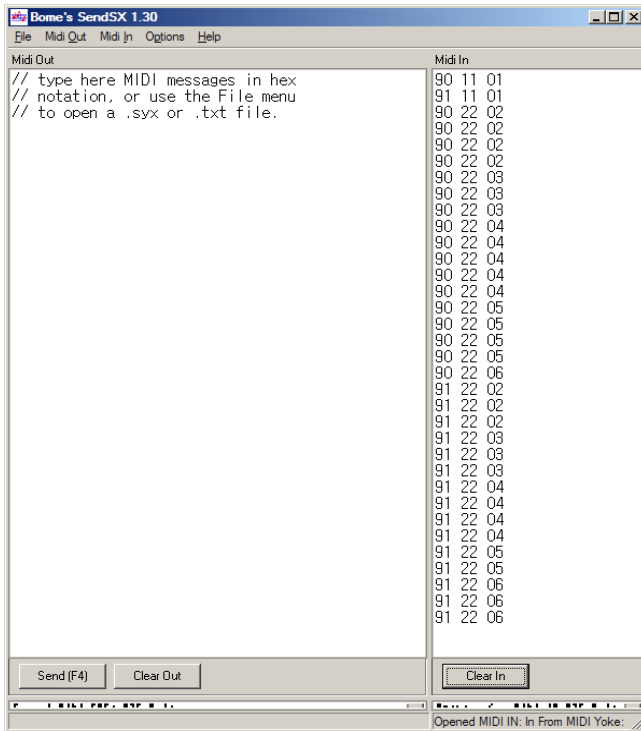
2. Edit Aliases:



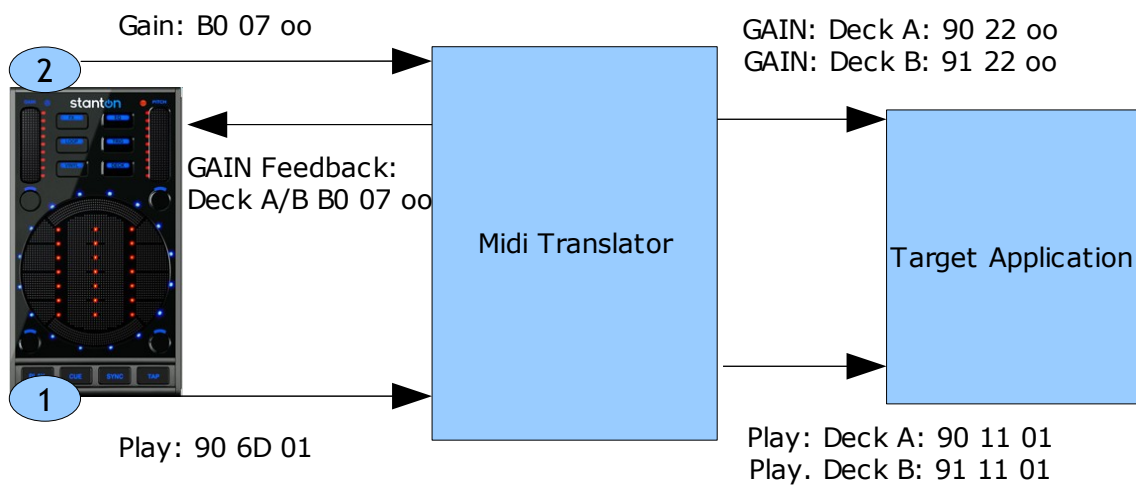
5 Test All

Open Bome's SendSX and Press Play Deck A, Play Deck B. Then GAIN Deck A and GAIN Deck B.

Your result should be:



6 What we have done



7 Running in DaRouter

Download DaRouter

(<http://www.enterthesystem.com/downloads/darouter.php>), and load the Preset you have saved.

All 3 Devices should be activated and the output should be the same like in chapter 4. Only the "To application" virtual device should be "From DaRouter".



8 Links

Bome's Midi Translator: <http://www.bome.com/products/miditranslator>

Bome's Send SX: <http://www.bome.com/products/sendsx>

SCS.3d: <http://www.enterthesystem.com/system/scs3d/>

DaRouter: <http://www.enterthesystem.com/downloads/darouter.php>

Stanton Forum: <http://forums.stantondj.com/viewforum.php?f=7>